

Advanced Simulating Software for Continuous Casting

# CC-DESIGN

The Right Tool for Caster Pass-line Design

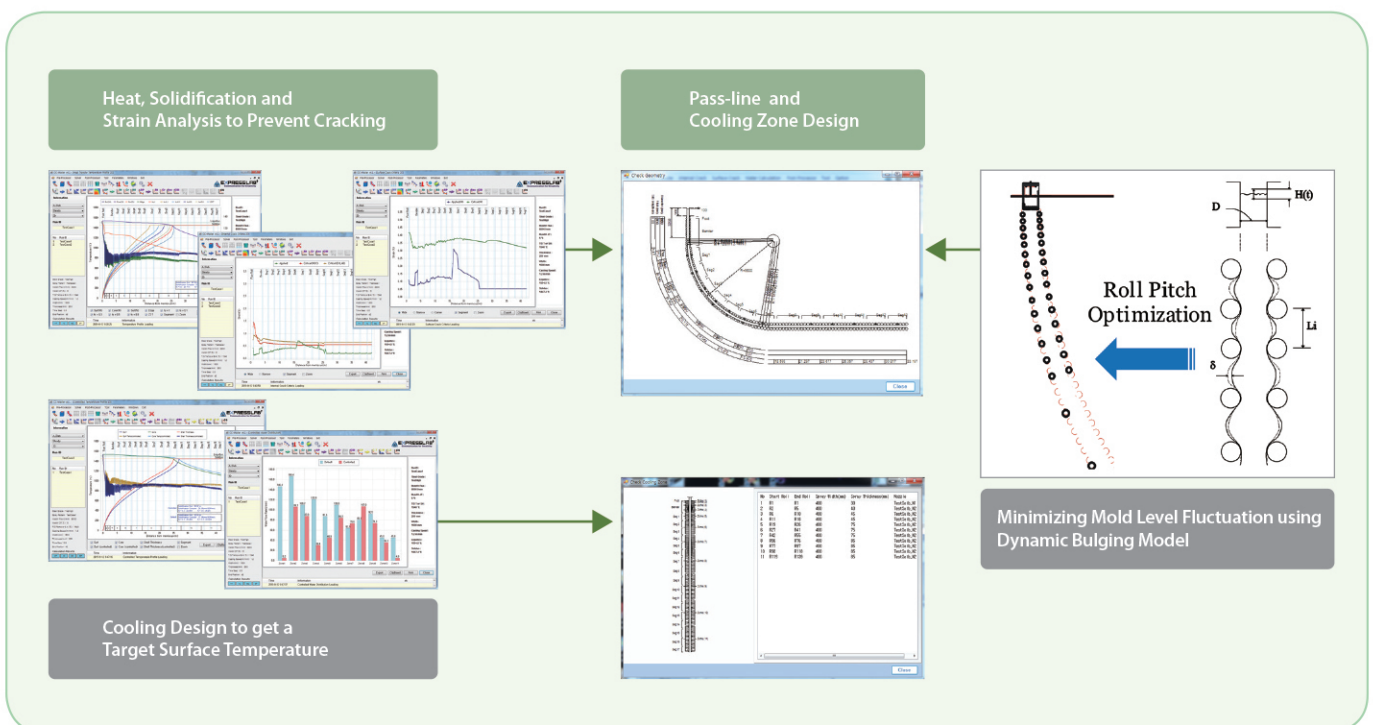


CC-DESIGN coupled with CC-MASTER solver was developed to design roll geometry of pass-line under which internal and surface cracks are prevented. Therefore, CC-DESIGN can be used to check and feasibility of roll geometry and to edit the geometry. By checking the feasibility of achievement of target productivity with certain product-mix without internal cracks and surface cracks, roll geometry or segment can be designed or modified accordingly.

Easy-to-Use / Competitiveness / User-friendly environment

## FEATURES

- Roll geometry and cooling zone design
- Coupled with process simulator (CC-MASTER)
- Roll geometry design or modification to prevent midway and transverse cracks
- Roll pitch modification to reduce mold level fluctuation due to dynamic bulging
- Checking the feasibility of and editing a roll geometry
- Useful results for roll and bearing design
- Useful results for choice of driving motor and layout of driving rolls





## MODULES

### Basic module

- Heat Transfer Module
- Water Flux Calculation Module
- User Interface

### Additional module

- Internal Crack Module
- Surface Crack Module
- Dynamic Bulging Module
- Design Toolkit

### Material Database

- Thermal Properties DB
- Internal Crack Properties DB
- Surface Crack Properties DB

## FUNCTIONS

- Pass-line Visualization
- Autocad Script Export of Roll Geometry Data
- Calculation of Roll Deflection by Split Type
- Calculation of Bearing Loads
- Calculation of Withdrawal Force
- Calculation of Driving Motor Power
- Calculation of Pinch Roll Force
- Calculation of Soft Reduction Force

